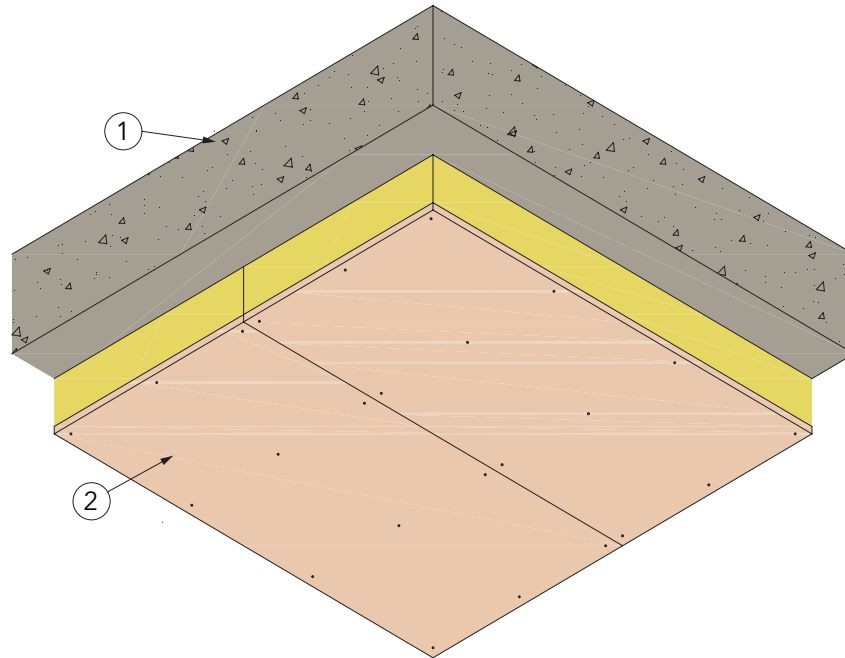


PROMAT® TL BOARD



INTRODUCTION

Promat® TL Board (2) is comprised of a calcium silicate facing board bonded to a phenolic insulation, and is specifically designed for the thermal upgrading of semi-exposed concrete decks (1). The thickness of Promat® TL Board used is dependent upon the required U-value, which in turn is dependent on the existing construction and method of fixing.

The following recommendations should be adopted only when Promat® TL Board is being fixed directly to the underside of a concrete deck.

Promat® TL Board can be installed using 12 fixings per board, to withstand wind load of 0.3 kN/m².

Please contact Promat Technical Services for fixing recommendations applicable for higher design wind loadings.

Fixing Centres:

Nominal 600mm across width and 760mm along the length.

Qty of Fixings:

Minimum 12 No. fixings per 1200mm x 2400mm board.

Edge Spacing:

Minimum 50mm from edge and minimum 50mm from corner.

FIXING TYPE

Fischer DIPK 10:

Minimum 30mm penetration into concrete (plastic fixing).

Fischer FM:

A 25mm diameter steel washer must be used with this fixing, minimum 30mm penetration into concrete (metal fixing).

Ejot DDS 7.3mm:

Minimum 20mm penetration into concrete (metal fixing).

All fixings should be sized and installed in accordance with the manufacturers recommendations.

AUTHORITY: PROMAT RECOMMENDATION - BASED ON IN-HOUSE KNOWLEDGE AND TECHNICAL EXPERIENCE

